

Plant Historian – modular MES software solution



- ▶ process control system independent
- ▶ scalable
- ▶ intuitive

Overview:

Plant Historian AM

Alarm management

- ▶ Long-term storage and analysis of events
- ▶ Increase in plant security by clearly defined process instructions
- ▶ Reduced reaction time by automatic alarm per SMS, mail or phone

Plant Historian PDA

Process data storage

- ▶ Linking of trend and event information
- ▶ Intuitive analysis tool with a large number of evaluation possibilities
- ▶ Batch related evaluation and trend indication

Plant Historian SB

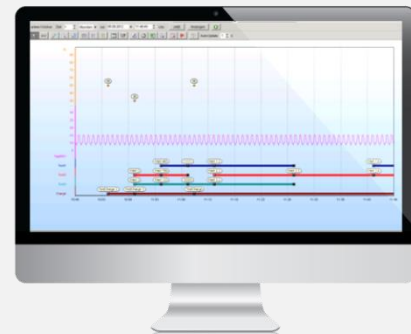
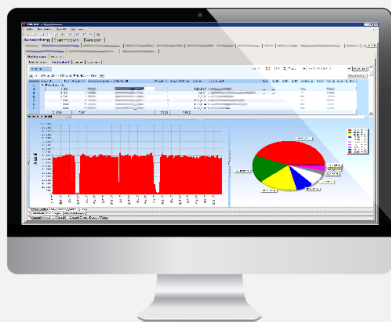
Digital shift book

- ▶ Company-wide uniform documentation of shift operation events
- ▶ Automated reporting and distribution
- ▶ Recording of standby operations and failures

Plant Historian MDE/OEE

Machine data acquisition/ overall equipment effectiveness

- ▶ Collection of technical operation data
- ▶ Transparent machine monitoring and analysis (downtimes, changeover times...)
- ▶ Determination of operating figures and benchmarking



Plant Historian LAB

Collection of laboratory data

- ▶ Supply of relevant data
- ▶ Manual insertion of relevant information
- ▶ Visualization and edition
- ▶ Connection to laboratory equipment

Plant Historian RM

Reporting

- ▶ Reports as PDF or in Excel
- ▶ Automatic distribution
- ▶ Different types of reporting
- ▶ Reports for different recipient groups

Plant Historian EM

Energy management

- ▶ Energy monitoring and controlling according to ISO 50001
- ▶ Emission monitoring
- ▶ Evaluation of accounts
- ▶ Visual presentation options
- ▶ Validation and alarm of accounting grids

PCS-independent - scalable - intuitive



Plant Historian – modular MES software solution



- ▶ process control system independent
- ▶ scalable
- ▶ intuitive

Our MES software series **Plant Historian** has been applied in industrial enterprises in different countries of Europe, Asia and South America for many years - with best practice leading to a continuous development and improvement.

Plant Historian is an 'out of the box' solution for areas like long-term archiving and the analysis of alarms and events, process data archiving and analysis, the collection of laboratory and machine data, digital shift book or energy management.

The system can be connected to any number of PLC/PCS systems. Optimization potentials are identified successively and realized in an effective and sustainable manner.

Plant Historian provides a higher level of security, offers better data availability and facilitates the optimization of production processes

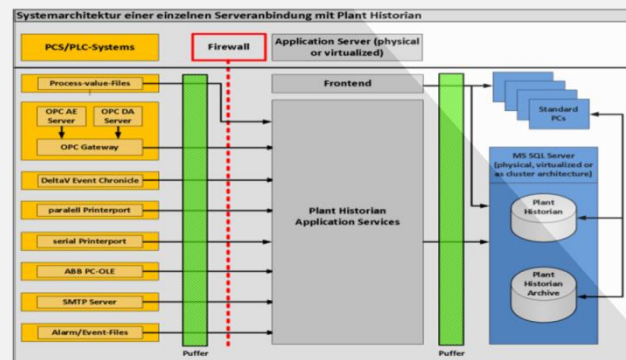


Benefit:

- ▶ Company-wide central solution for process data archiving and analysis
- ▶ Tool for quality management and process optimization
- ▶ Identification of ineffective procedures/processes
- ▶ Reduction of costs concerning hardware, software licenses, maintenance and support
- ▶ Connection to any kind of control system possible
- ▶ Central infrastructure

Technologies:

- ▶ Connection via standardized interfaces:
 - ▶ M-Bus to TCP/IP
 - ▶ Modbus to TCP/IP
 - ▶ 4-20 mA bzw. 0-20 V to TCP/IP
- ▶ standardized OPC connection to the PLC/PCS Welt:
 - ▶ Siemens, Emerson, Honeywell, ABB, Foxboro
- ▶ Memory and runtime optimized longtime archiving, operational interventions and charge protocols
- ▶ Central SQL database and central application server
- ▶ High availability by buffer structures and redundancies
- ▶ Scalable system: adding of new PCS/PLC server connections possible



PCS-independent - scalable - intuitive

