

PLSMPRO

ICA-system

PLSMPRO is a measuring list program for projecting of hardware data, for EX(i) verification and SIL classification

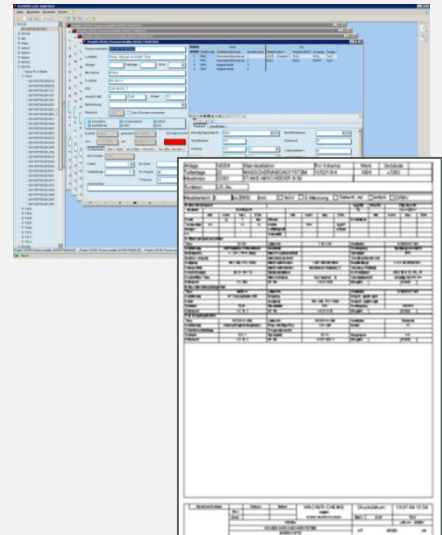


PLSMPRO is a software solution for collecting, managing and editing measuring circuit data, device lists, basic data and device specification sheets. Besides the projecting of hardware data, PLSMPRO ensures the EX(i) verification for submission to the inspecting authority.

PLSMPRO supports the management of maintenance contracts, disposition, schedule tracking and the documentation of recurring maintenance work on EMR facilities, lightning protection systems and scale calibration.

PLSMPRO provides relevant information in form of standardized projecting documents, e.g.:

- ▶ Measuring circuit data, device lists
- ▶ HTML device viewer for reading access (e.g. for workshop staff, process engineering, maintenance)
- ▶ Basic data
- ▶ Device specification sheets
- ▶ Test / operation instructions
- ▶ Security, quality and environment relevant ICA-information
- ▶ EX(i) device data and cable information (EX(i) verification protocols for submission to the inspecting authority)



Functions:

- ▶ Gathering, managing and provision of hardware data for projecting as well as for EX(i) verification
- ▶ Customer data for CAE systems, e.g. RUPLAN, EPLAN, AUCOPLAN can be used as project source
- ▶ Integrated revision management: revision tracking with revision counter
- ▶ Simple and safe editing and provision of measuring circuit data, device lists, basic data, device specification sheets
- ▶ Multi projecting function with user management and authorization concept
- ▶ Reporting system and printer management
- ▶ Comment function for recognized changes
- ▶ Data interface: import / export to CAE systems with change preview and import history
- ▶ Shared data storage with the PCS documentation software **PLSDOC® RE**



PCS-independent - scalable- intuitive



PLSMPRO

ICA-system

PLSMPRO is a measuring list program for projecting of hardware data, for EX(i) verification and SIL classification



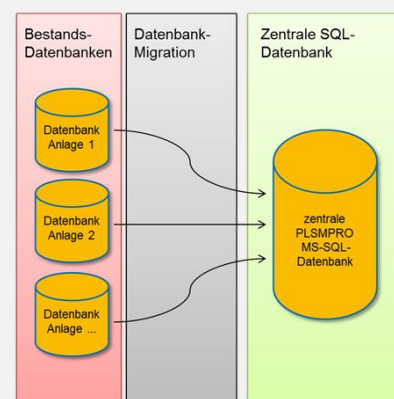
Benefits:

- ▶ Comprehensible data import
- ▶ Corporate-wide availability of device lists and measuring list specifications in HTML
- ▶ Maintenance planning
- ▶ Generation of order lists
- ▶ Consistent facility documentation leads to higher quantity and quality in production
- ▶ Central data collection of plant inventory
- ▶ Gapless revision history with revision comments
- ▶ Faster failure identification
- ▶ Fast, efficient identification of content
- ▶ Enables fast local recording of the device environment
- ▶ Exemplary gathering of device data for later reuse.
- ▶ Fast creation of similar devices
- ▶ Easy EX(i) intrinsic safety calculation due to a comprehensive device database
- ▶ SIL classification
- ▶ Central administration from the service provider via remote connection
- ▶ Cost savings and failure prevention due to a central infrastructure
 - ▶ in terms of data administration
 - ▶ In terms of data security

Aquisition, adaptation and allocation of PLT data – PLSMPRO supports you to with hardware projection

Technologies:

- ▶ Customer data from CAE systems, e.g. RUPLAN, EPLAN, AUCOPLAN can be reused as projecting source
- ▶ Central installation – no client installation necessary
- ▶ Measuring point licensing – no client licensing
- ▶ Easy data transfer to Comos PT
- ▶ Central PLSMPRO SQL database
- ▶ Multi-projecting function (all facilities in one system – facility visibility depending on authorization)
- ▶ HTML device viewer



PCS-independent - scalable- intuitive



PLSMPRO

ICA-system

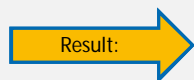
PLSMPRO is a measuring list program for projecting of hardware data, for EX(i) verification and SIL classification



Additional Modules:

The PLSMPRO WI Module supports the management of maintenance orders, Disposition, schedule tracking and the documentation of recurring maintenance work.

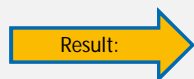
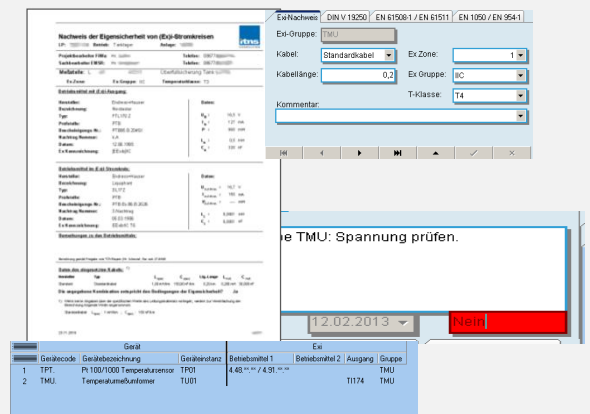
- ▶ Disposition, schedule tracking and documentation of recurring maintenance work of EMR facilities, lightning protection facilities and scale calibration
- ▶ Monitoring of mandatory inspections for EMR facilities
- ▶ Documentation of inspections according to legal obligations, regulations and guidelines
- ▶ Standard procedure for maintenance strategy
- ▶ Recording, optimization, description, verification



- ▶ Automatic notification of due maintenance work
- ▶ Automatic forwarding of test documents to the maintenance division
- ▶ Central and standard tracking of maintenance measures

The PLSMPRO EX(i) Module supports the EX(i) verification for submission to the inspecting authority.

- ▶ Comprehensive database of EX(i) information included in delivery
- ▶ Hence, user-friendly EX(i) calculations for measuring points



- ▶ Fast creation of similar devices
- ▶ Easy EX(i) intrinsic security calculations due to a comprehensive device database
- ▶ Verification protocols for submission to the inspecting authority (TÜV)

PCS-independent - scalable- intuitive

